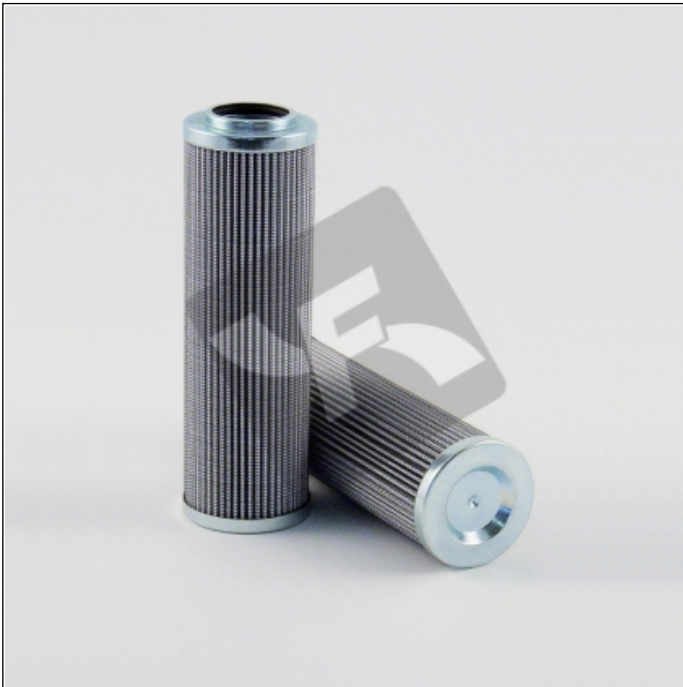


D160G06A

printed on: 21-05-2025



TECHNICAL INFO

Media type	INORGANIC FIBERGLASS
Efficiency	5 $\mu\text{m}_{(c)}$ $\beta_x \geq 200$
Efficiency 1	7 $\mu\text{m}_{(c)}$ $\beta_x \geq 1000$
Flow direction	OUT-IN
Collapse Δp	21 bar
Seals	NBR
Temperature range	-30°C +100°C



OVERALL DIMENSIONS

D1	56,0 mm
D2	32,0 mm
H1	178,0 mm

Technical information may change without notice. Image and drawing are representative only