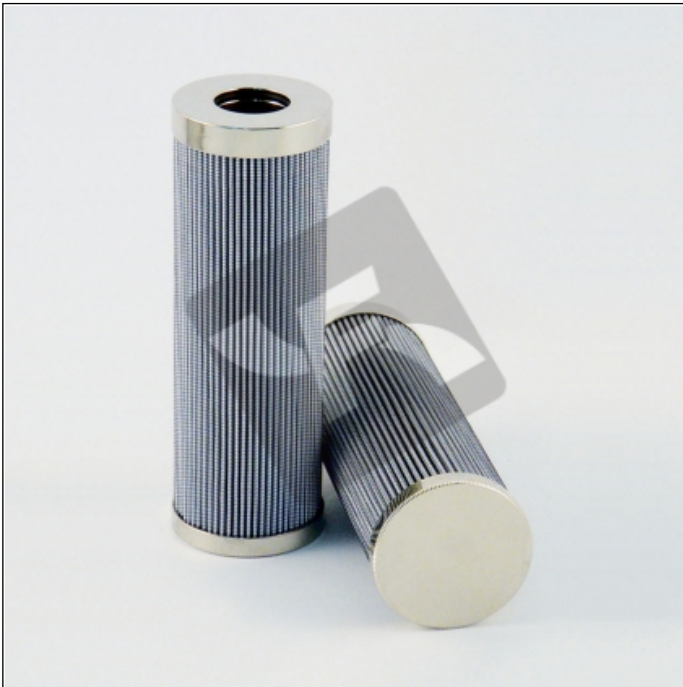


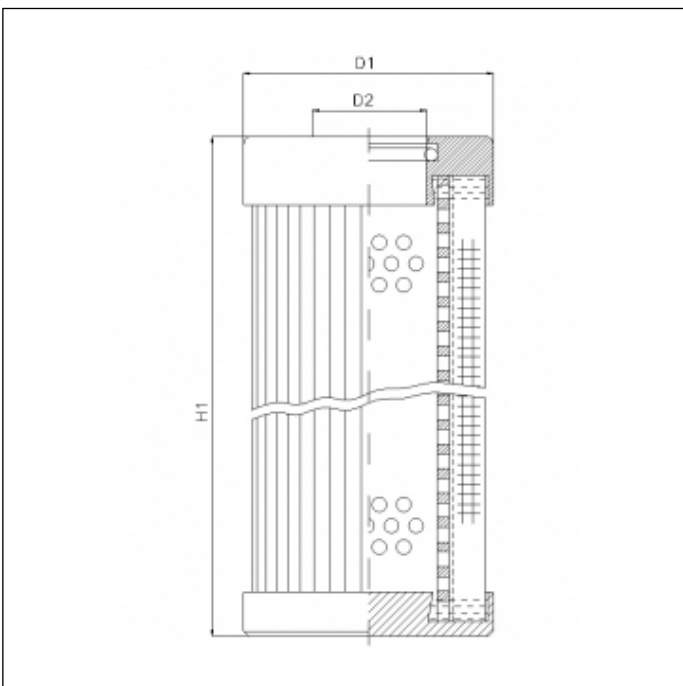
D181G10BV

printed on: 23-04-2025



TECHNICAL INFO

Media type	INORGANIC FIBERGLASS
Efficiency	10 $\mu\text{m}_{(c)}$ $\beta_x \geq 200$
Efficiency 1	12 $\mu\text{m}_{(c)}$ $\beta_x \geq 1000$
Flow direction	OUT-IN
Collapse Δp	210 bar
Seals	FKM
Temperature range	-25°C +120°C



OVERALL DIMENSIONS

D1	71,0 mm
D2	33,5 mm
H1	209,0 mm