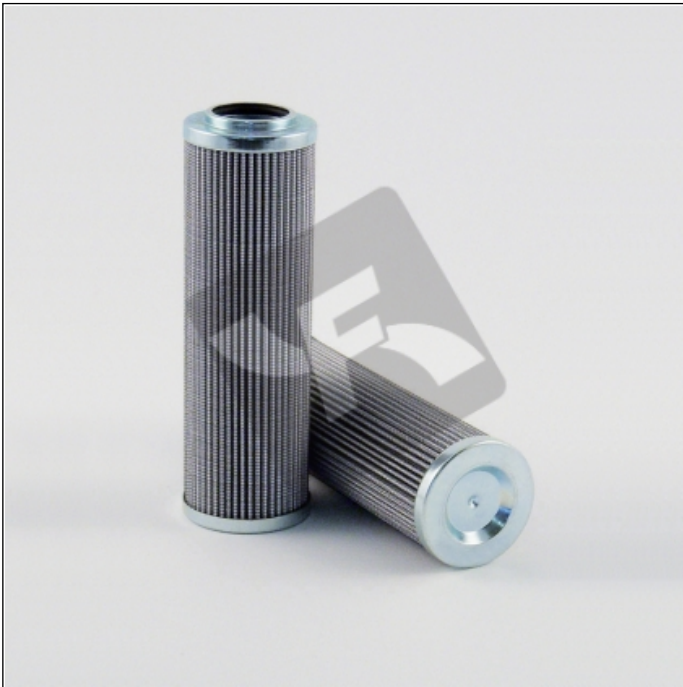


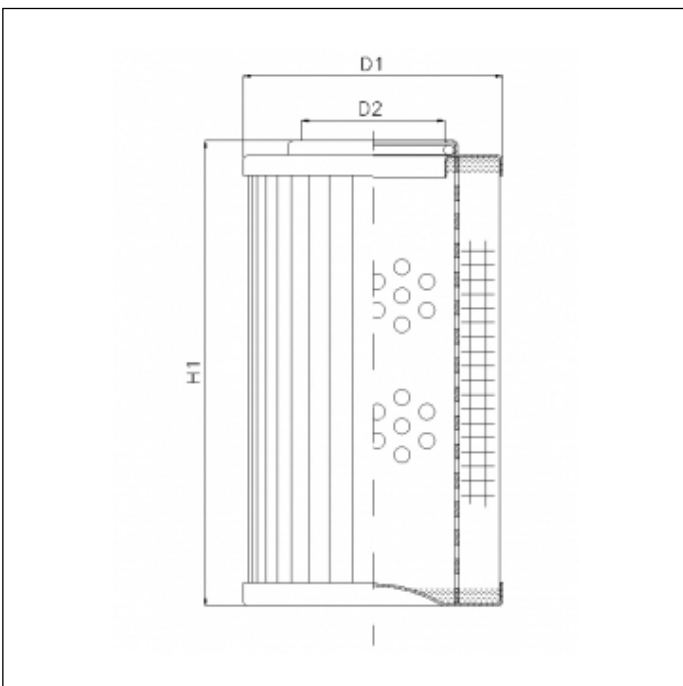
R281C10

printed on: 29-04-2025



TECHNICAL INFO

Media type	IMPREGNATED PAPER
Efficiency	10 $\mu\text{m}_{(c)}$ $\beta_x \geq 2$
Flow direction	OUT-IN
Collapse Δp	20 bar
Seals	NBR
Temperature range	-30°C +100°C



OVERALL DIMENSIONS

D1	78,0 mm
D2	40,5 mm
H1	239,0 mm