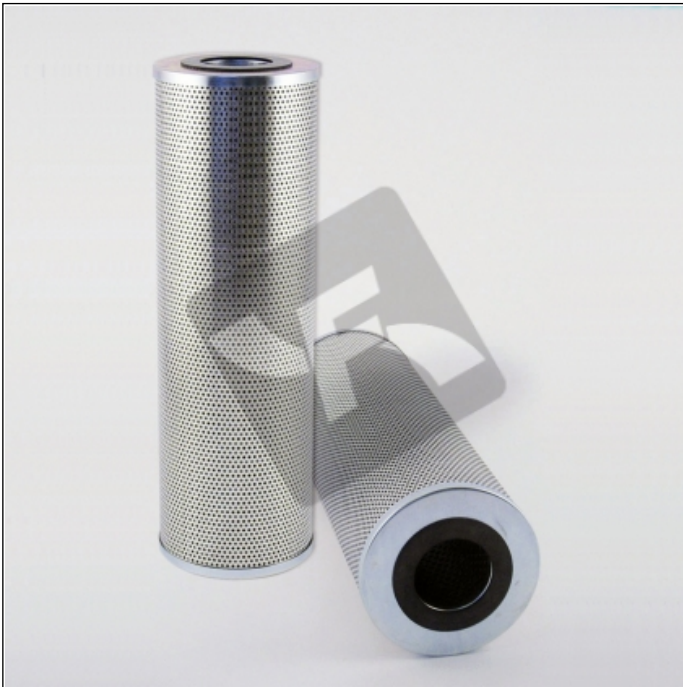


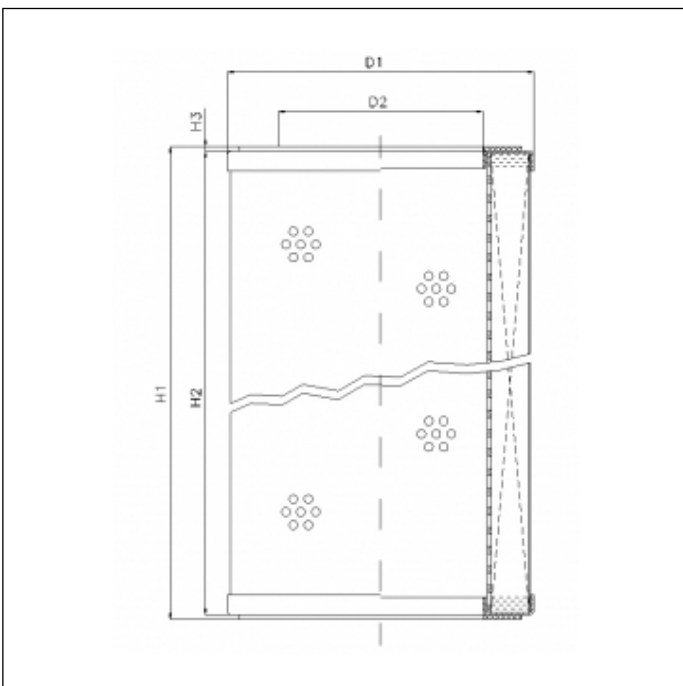
R320G03PV

printed on: 23-04-2025



TECHNICAL INFO

Media type	INORGANIC FIBERGLASS
Efficiency	<math><4 \mu\text{m}_{(c)} \beta_x \geq 200</math>
Efficiency 1	$5 \mu\text{m}_{(c)} \beta_x \geq 1000$
Flow direction	OUT-IN
Collapse Δp	10 bar
Seals	FKM
Temperature range	-25°C +120°C



OVERALL DIMENSIONS

D1	154,5 mm
D2	66,5 mm
H1	457,0 mm
H2	453,0 mm
H3	2,0 mm