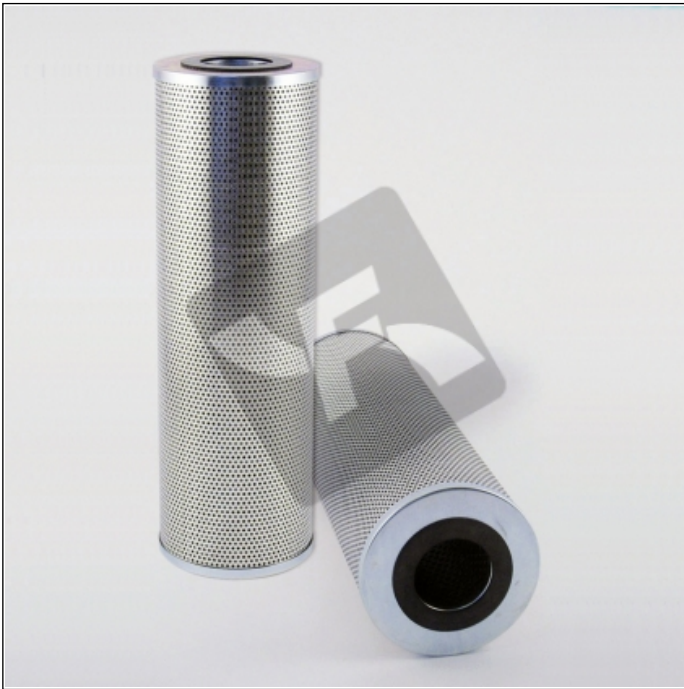


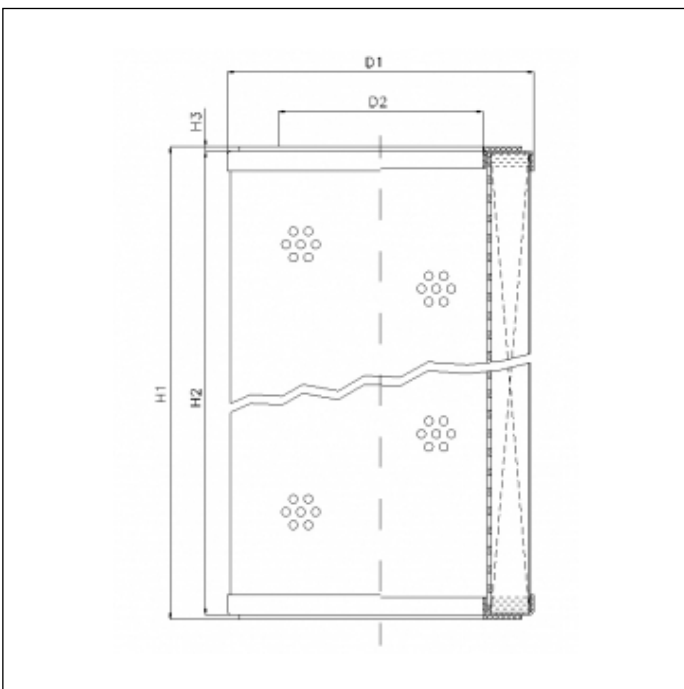
## R331C20P

printed on: 23-04-2025



### TECHNICAL INFO

Media type	IMPREGNATED PAPER
Efficiency	25 $\mu\text{m}_{(c)}$ $\beta_x \geq 2$
Flow direction	OUT-IN
Collapse $\Delta p$	7 bar
Seals	NBR
Temperature range	-30°C +100°C



### OVERALL DIMENSIONS

D1	154,5 mm
D2	88,9 mm
H1	457,0 mm
H2	453,0 mm
H3	2,0 mm