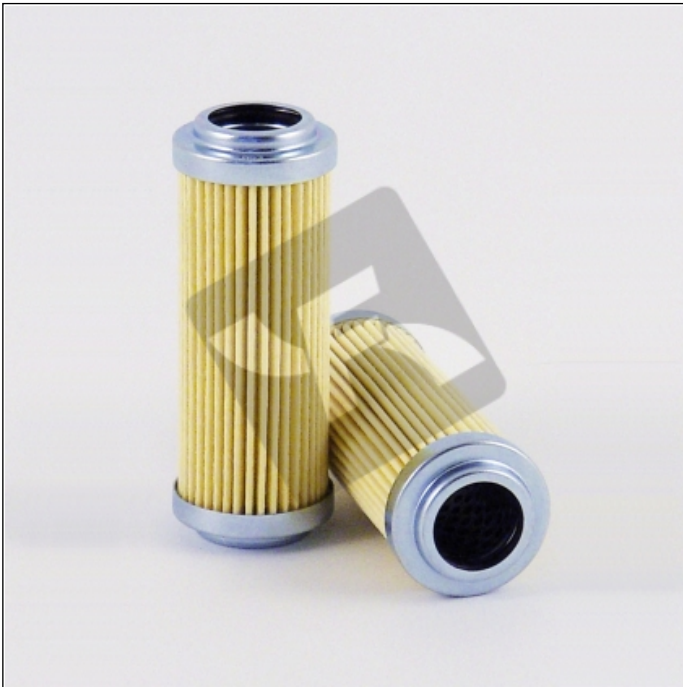


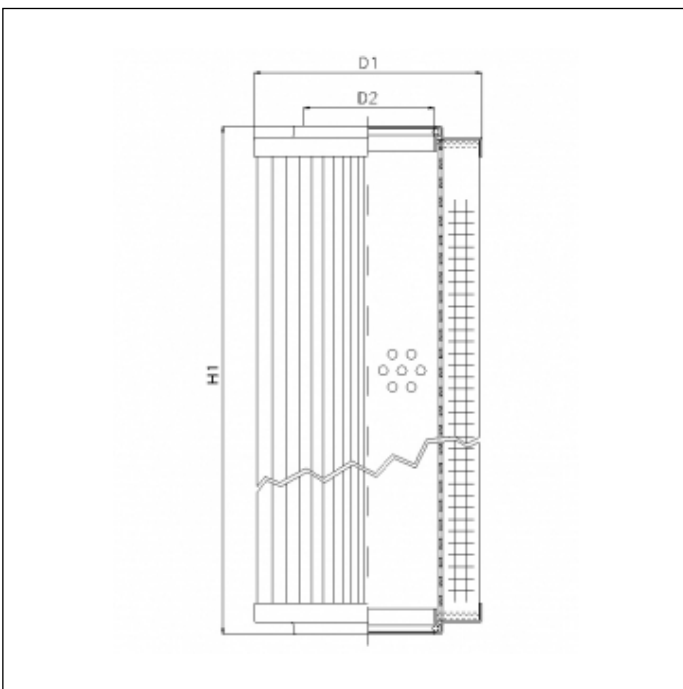
R521T40

printed on: 29-04-2025



TECHNICAL INFO

Media type	WIRE MESH
Efficiency	40 µm
Flow direction	OUT-IN
Collapse Δp	25 bar
Seals	NBR
Temperature range	-30°C +100°C



OVERALL DIMENSIONS

D1	45,0 mm
D2	25,5 mm
H1	213,0 mm

Technical information may change without notice. Image and drawing are representative only