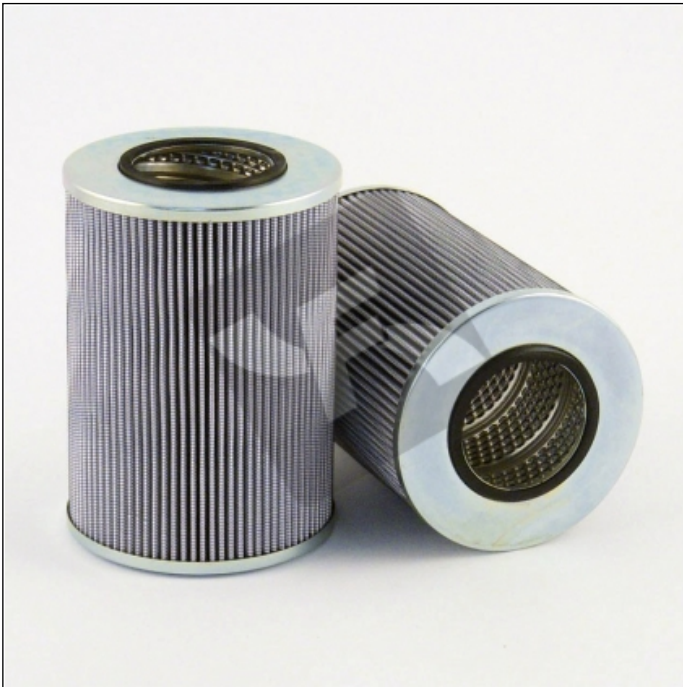


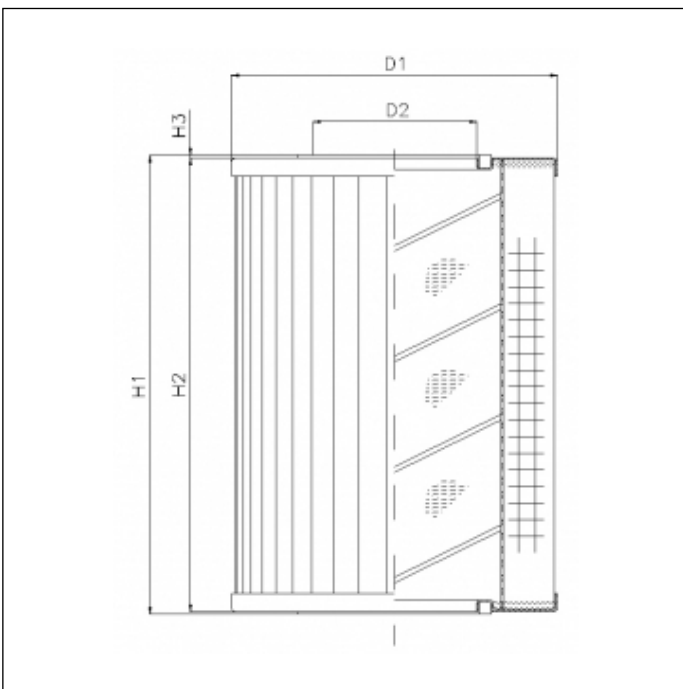
R660T40

printed on: 13-04-2026



TECHNICAL INFO

Media type	WIRE MESH
Efficiency	40 µm
Flow direction	OUT-IN
Collapse Δp	8 bar
Seals	NBR
Temperature range	-30°C +100°C



OVERALL DIMENSIONS

D1	118,0 mm
D2	59,5 mm
H1	165,0 mm
H2	163,0 mm
H3	1,0 mm