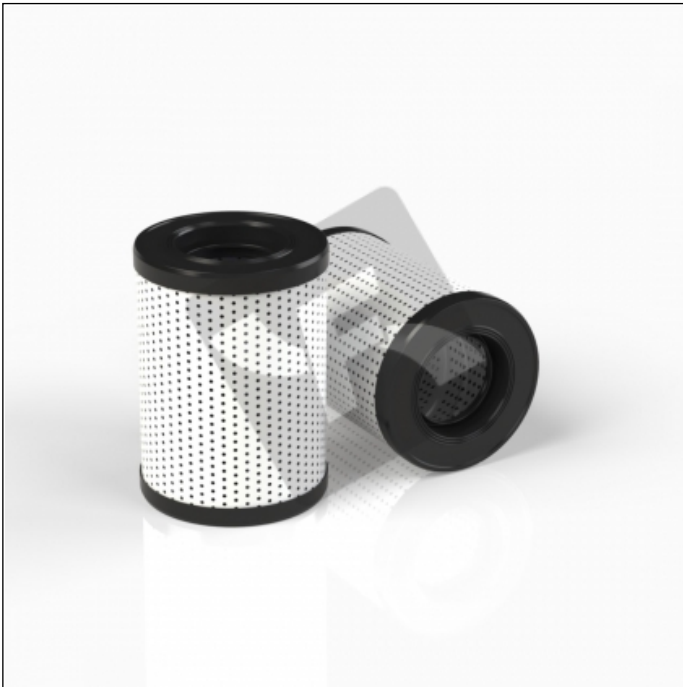


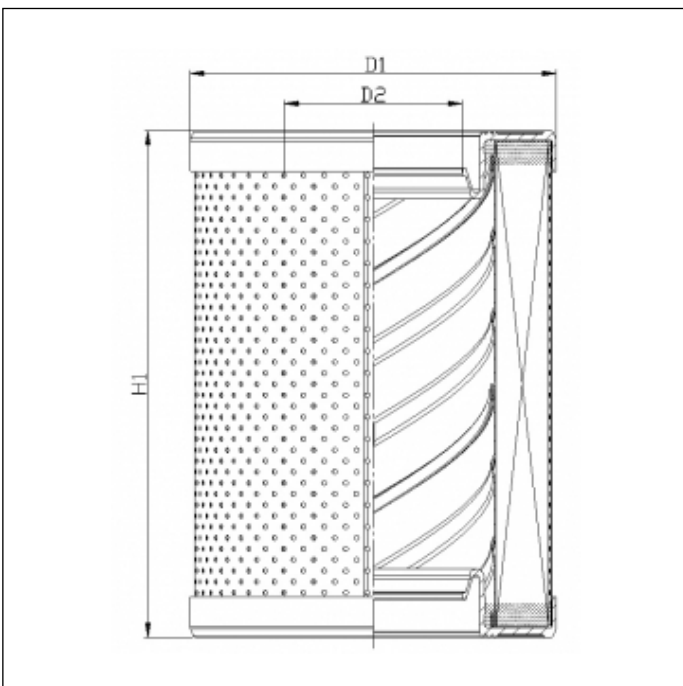
R661G15B0

printed on: 23-04-2025



TECHNICAL INFO

Media type	INORGANIC FIBERGLASS
Efficiency	15 $\mu\text{m}_{(c)}$ $\beta_x \geq 200$
Efficiency 1	17 $\mu\text{m}_{(c)}$ $\beta_x \geq 1000$
Flow direction	OUT-IN
Collapse Δp	8 bar
Temperature range	-25°C +120°C



OVERALL DIMENSIONS

D1	118,0 mm
D2	57,3 mm
H1	329,0 mm

Technical information may change without notice. Image and drawing are representative only