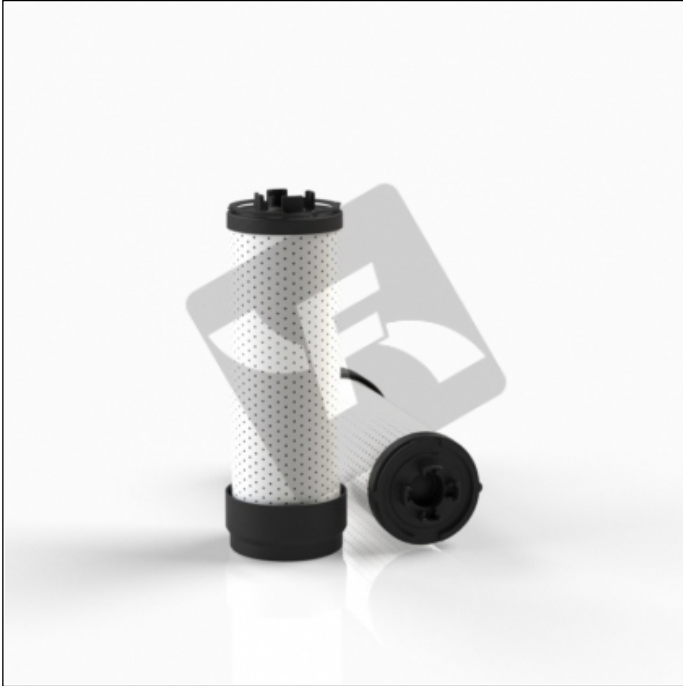


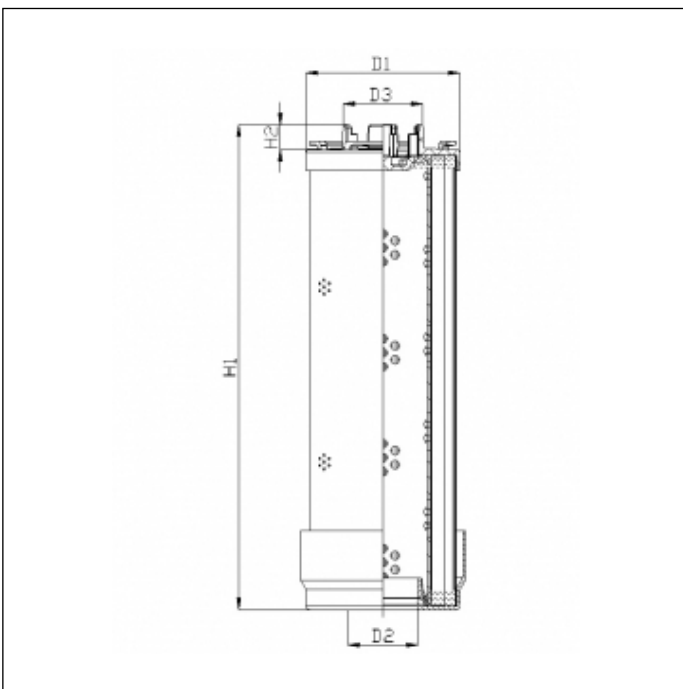
RHR210G10V0/AB1

printed on: 29-04-2025



TECHNICAL INFO

| | |
|---------------------|--|
| Media type | INORGANIC FIBERGLASS |
| Efficiency | 10 $\mu\text{m}_{(c)}$ $\beta_x \geq 200$ |
| Efficiency 1 | 12 $\mu\text{m}_{(c)}$ $\beta_x \geq 1000$ |
| Flow direction | OUT-IN |
| Collapse Δp | 20 bar |
| Seals | FKM |
| Temperature range | -25°C +120°C |



OVERALL DIMENSIONS

| | |
|----|----------|
| D1 | 88,0 mm |
| D2 | 40,1 mm |
| D3 | 45,8 mm |
| H1 | 277,0 mm |
| H2 | 14,0 mm |