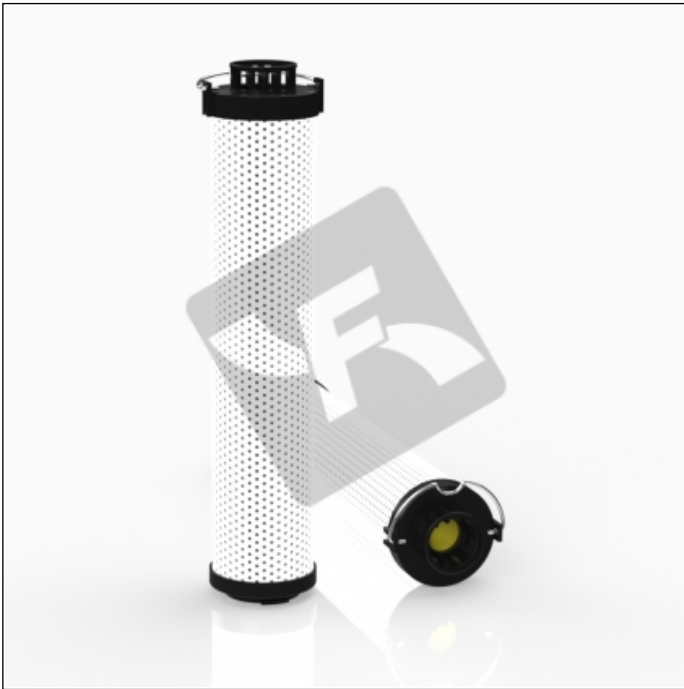


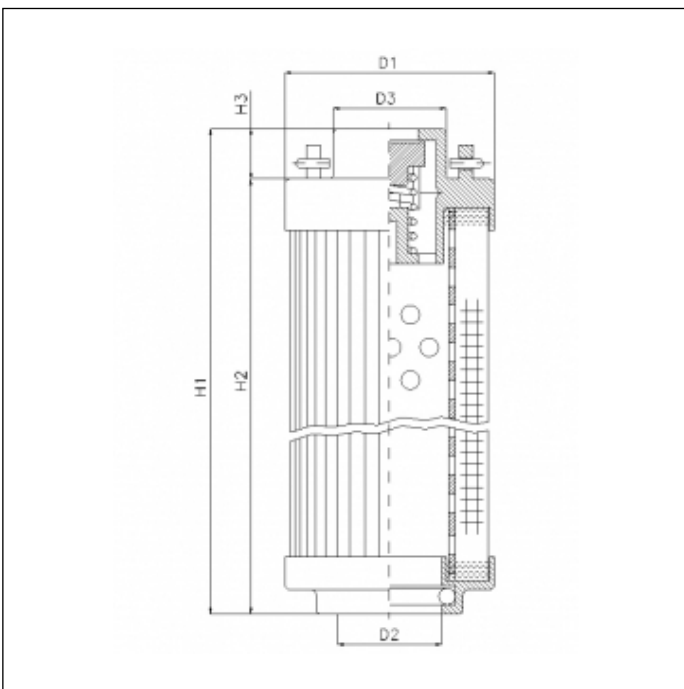
RHR240B50B3/AB1

printed on: 13-04-2026



TECHNICAL INFO

Media type	WIRE MESH
Efficiency	50 µm
Flow direction	OUT-IN
Collapse Δp	20 bar
Bypass setting	3.0 bar
Seals	NBR
Temperature range	-30°C +100°C



OVERALL DIMENSIONS

D1	60,0 mm
D2	34,5 mm
D3	36,0 mm
H1	203,5 mm
H2	189,5 mm
H3	13,5 mm

Technical information may change without notice. Image and drawing are representative only