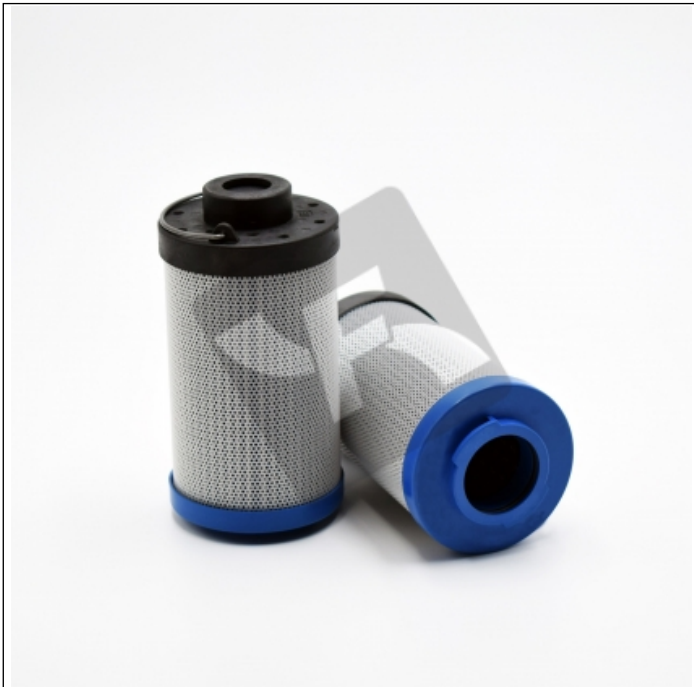


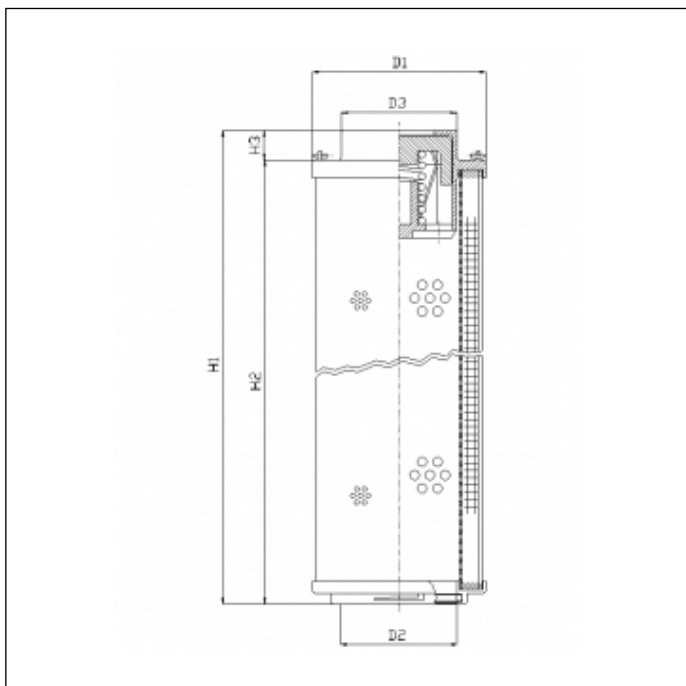
RHR280G01V/5/ESD

printed on: 29-04-2025



TECHNICAL INFO

Media type	INORGANIC FIBERGLASS
Efficiency	<math> < 4 \mu\text{m}_{(c)} \beta_x \geq 200 </math>
Efficiency 1	$4 \mu\text{m}_{(c)} \beta_x \geq 1000$
Flow direction	OUT-IN
Collapse Δp	20 bar
Seals	FKM
Temperature range	-25°C +100°C
Note	ANTI-ESD FILTER ELEMENT



OVERALL DIMENSIONS

D1	73,5 mm
D2	34,2 mm
D3	36,0 mm
H1	385,0 mm
H2	371,5 mm
H3	13,5 mm