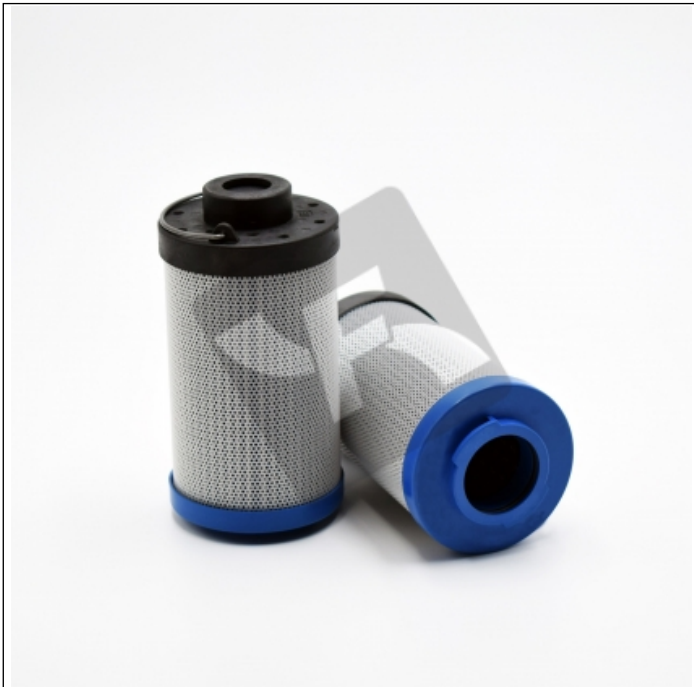


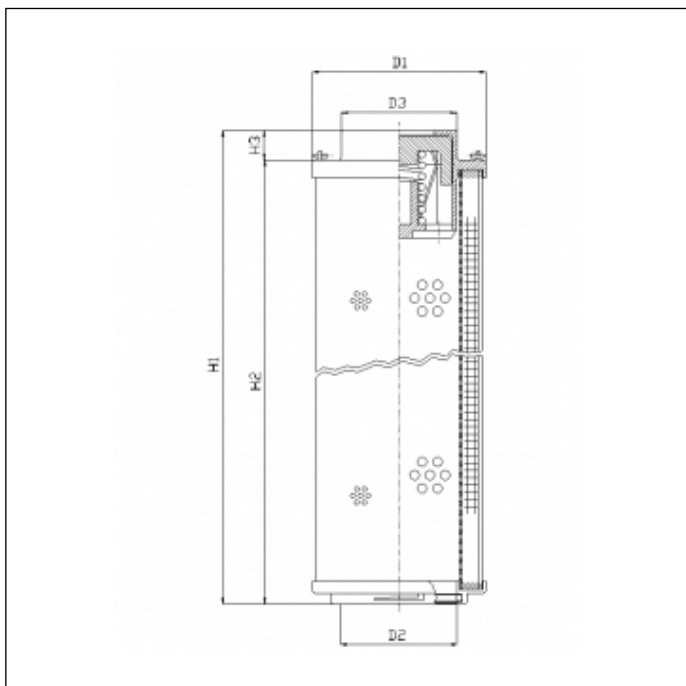
## RHR280G05V/3/ESD

printed on: 29-04-2025



### TECHNICAL INFO

Media type	INORGANIC FIBERGLASS
Efficiency	5 $\mu\text{m}_{(c)}$ $\beta_x \geq 200$
Efficiency 1	7 $\mu\text{m}_{(c)}$ $\beta_x \geq 1000$
Flow direction	OUT-IN
Collapse $\Delta p$	20 bar
Bypass setting	1.0 bar
Seals	FKM
Temperature range	-25°C +100°C
Note	ANTI-ESD FILTER ELEMENT



### OVERALL DIMENSIONS

D1	73,5 mm
D2	34,2 mm
D3	36,0 mm
H1	385,0 mm
H2	371,5 mm
H3	13,5 mm