

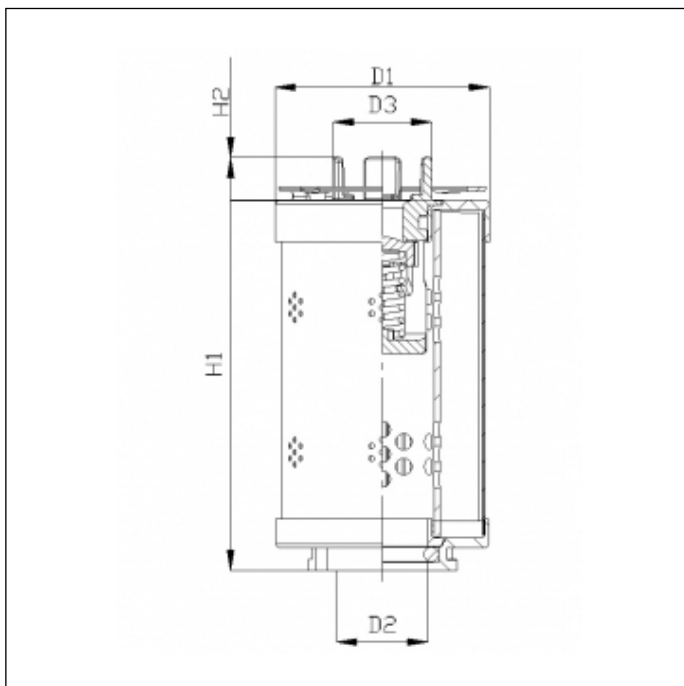
## RHR60G01B1/ESD

printed on: 29-04-2025



### TECHNICAL INFO

Media type	INORGANIC FIBERGLASS
Efficiency	<math> <4 \mu\text{m}_{(c)} \beta_x \geq 200 </math>
Efficiency 1	<math> 4 \mu\text{m}_{(c)} \beta_x \geq 1000 </math>
Flow direction	OUT-IN
Collapse $\Delta p$	20 bar
Bypass setting	1.0 bar
Seals	NBR
Temperature range	-30°C +100°C
Note	ANTI-ESD FILTER ELEMENT



### OVERALL DIMENSIONS

D1	52,0 mm
D2	22,2 mm
D3	24,0 mm
H1	100,0 mm
H2	10,3 mm