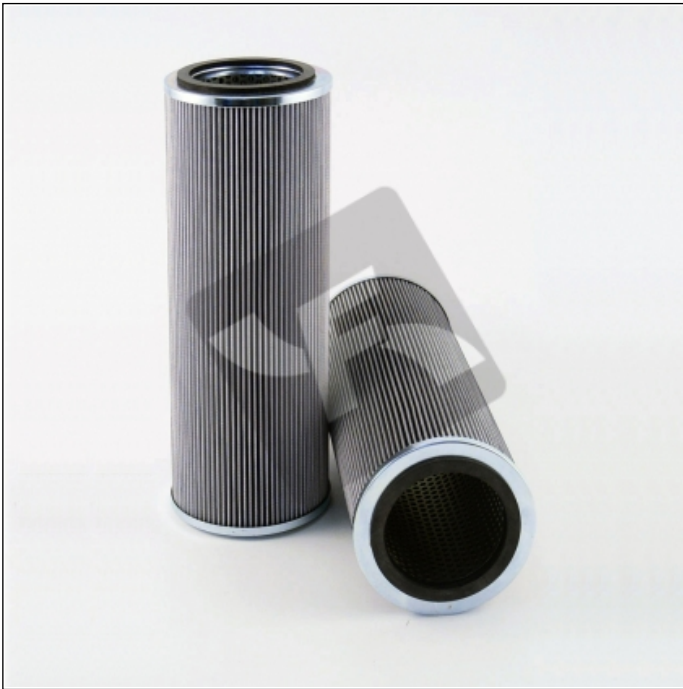


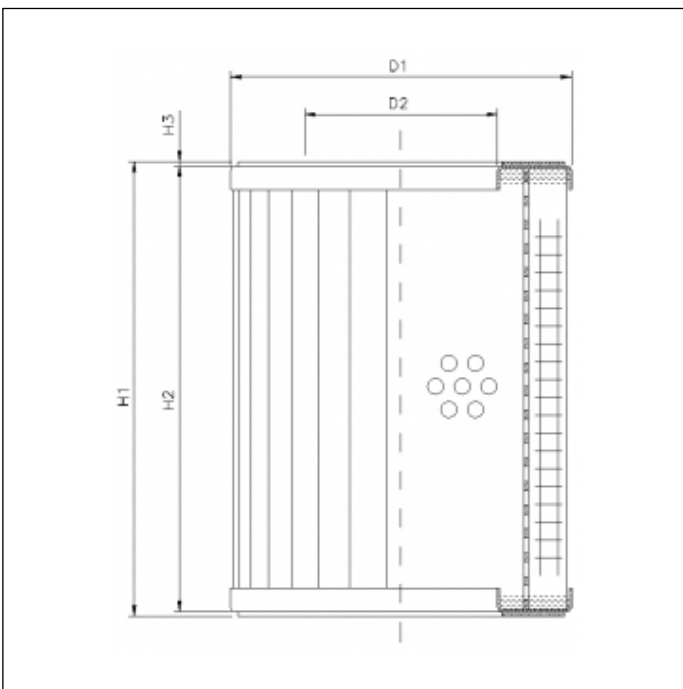
## RVR11400K05B

printed on: 23-04-2025



### TECHNICAL INFO

Media type	IMPREGNATED PAPER
Efficiency	5 $\mu\text{m}_{(c)}$ $\beta_x \geq 2$
Flow direction	OUT-IN
Collapse $\Delta p$	30 bar
Seals	NBR
Temperature range	-30°C +100°C



### OVERALL DIMENSIONS

D1	142,0 mm
D2	94,0 mm
H1	508,0 mm
H2	500,0 mm
H3	4,0 mm

Technical information may change without notice. Image and drawing are representative only