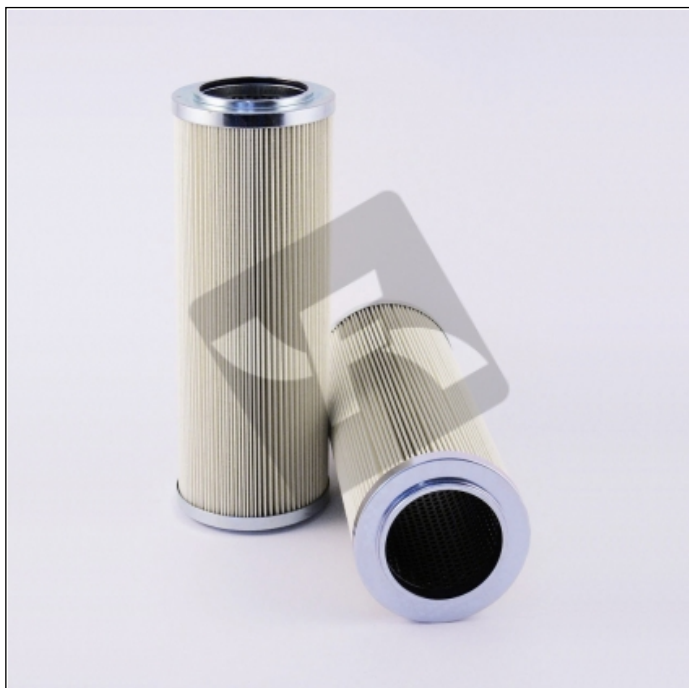


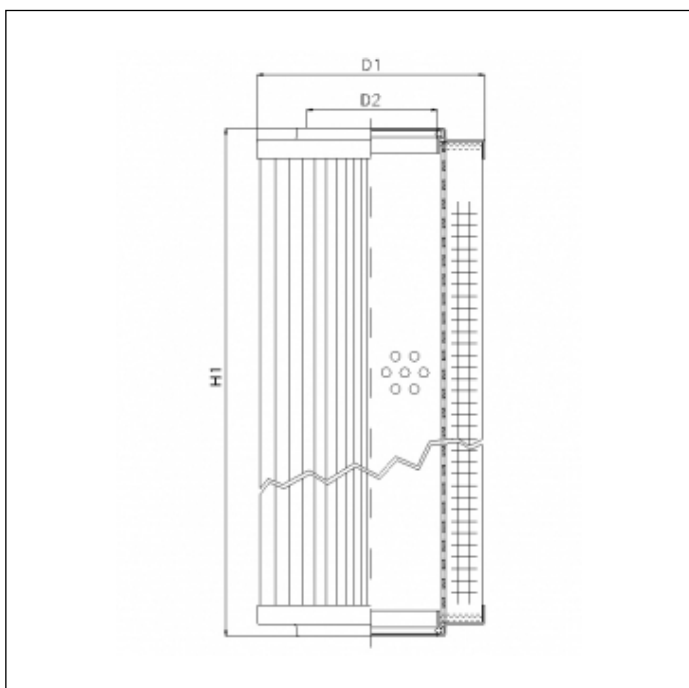
RVR11401E10B

printed on: 18-07-2025



TECHNICAL INFO

Media type	INORGANIC FIBERGLASS
Efficiency	10 $\mu\text{m}_{(c)}$ $\beta_x \geq 200$
Efficiency 1	12 $\mu\text{m}_{(c)}$ $\beta_x \geq 1000$
Flow direction	OUT-IN
Collapse Δp	30 bar
Seals	NBR
Temperature range	-30°C +100°C



OVERALL DIMENSIONS

D1	142,0 mm
D2	94,0 mm
H1	514,0 mm