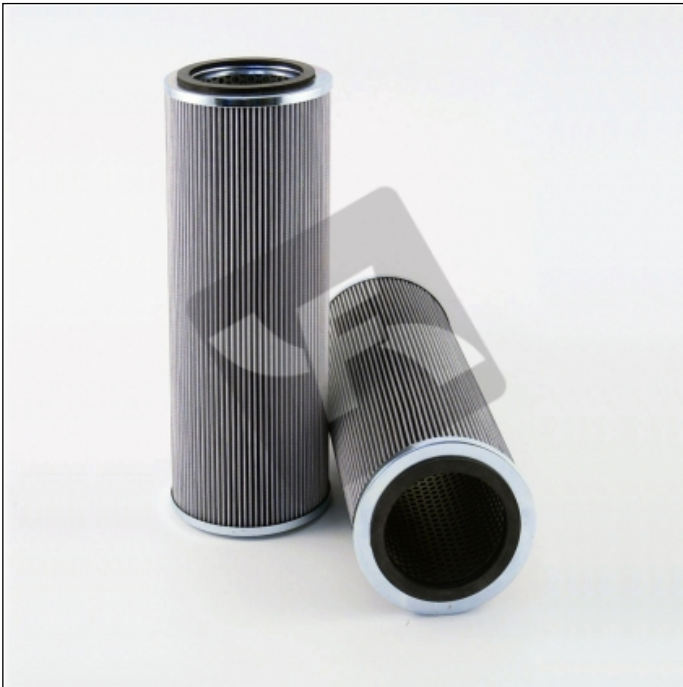


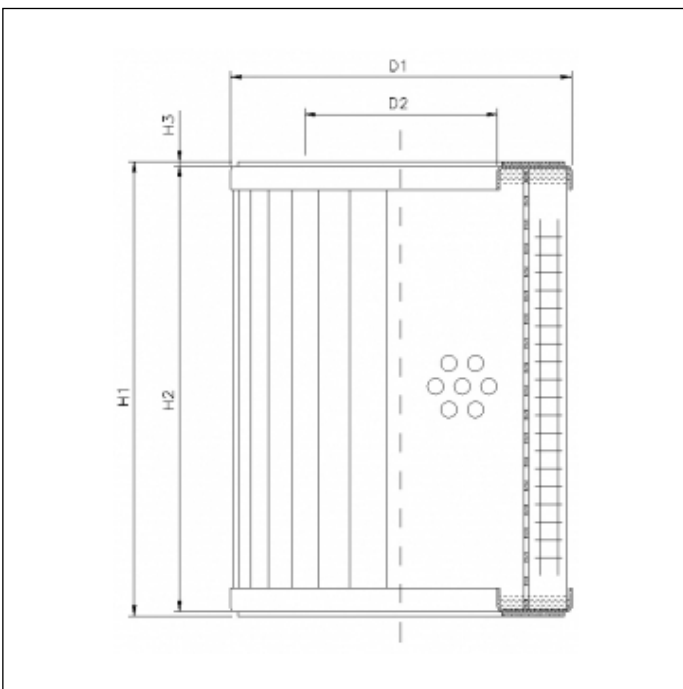
# **RVR11800B10B**

printed on: 05-08-2025



## **TECHNICAL INFO**

Media type	WIRE MESH
Efficiency	10 µm
Flow direction	OUT-IN
Collapse $\Delta p$	30 bar
Seals	NBR
Temperature range	-30°C +100°C



## **OVERALL DIMENSIONS**

D1	142,0 mm
D2	94,0 mm
H1	754,0 mm
H2	746,0 mm
H3	4,0 mm