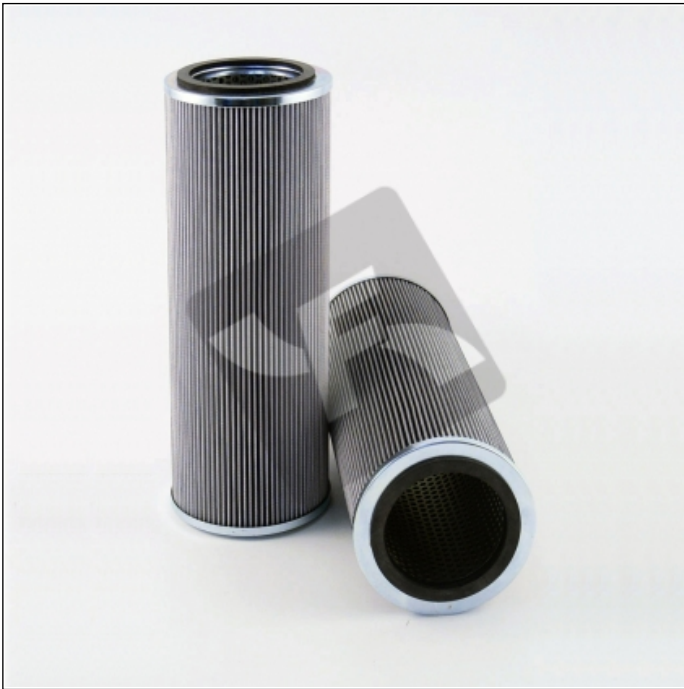


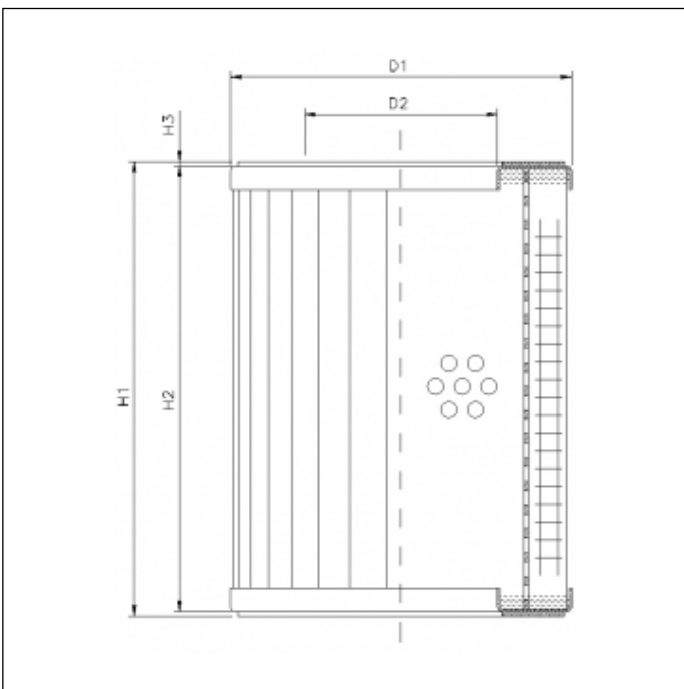
## RVR11800B25B

printed on: 23-04-2025



### TECHNICAL INFO

Media type	WIRE MESH
Efficiency	25 µm
Flow direction	OUT-IN
Collapse $\Delta p$	30 bar
Seals	NBR
Temperature range	-30°C +100°C



### OVERALL DIMENSIONS

D1	142,0 mm
D2	94,0 mm
H1	754,0 mm
H2	746,0 mm
H3	4,0 mm

Technical information may change without notice. Image and drawing are representative only