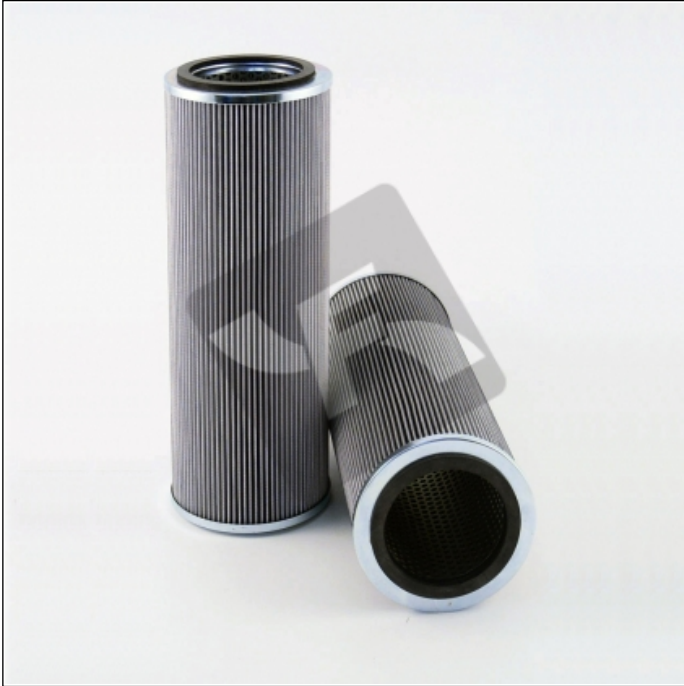


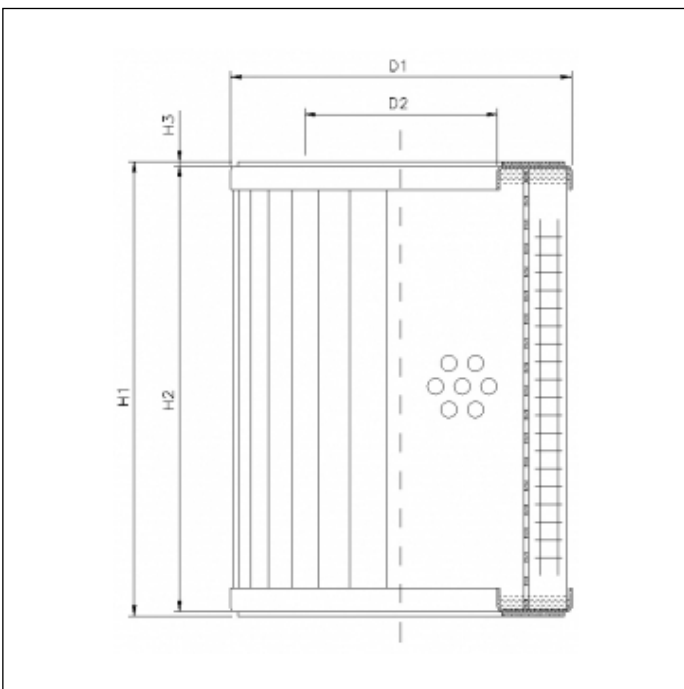
RVR11800E03B

printed on: 23-04-2025



TECHNICAL INFO

Media type	INORGANIC FIBERGLASS
Efficiency	<math><4 \mu\text{m}_{(c)} \beta_x \geq 200</math>
Efficiency 1	$5 \mu\text{m}_{(c)} \beta_x \geq 1000$
Flow direction	OUT-IN
Collapse Δp	30 bar
Seals	NBR
Temperature range	-30°C +100°C



OVERALL DIMENSIONS

D1	142,0 mm
D2	94,0 mm
H1	754,0 mm
H2	746,0 mm
H3	4,0 mm