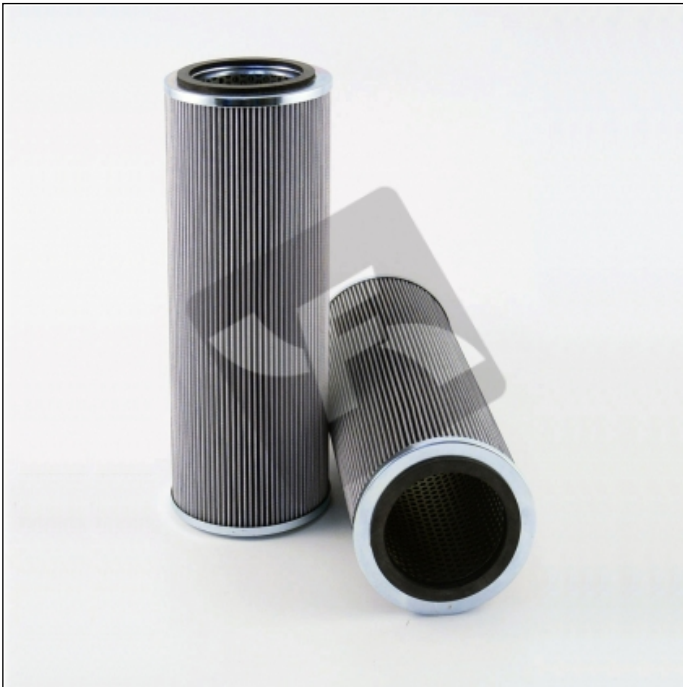


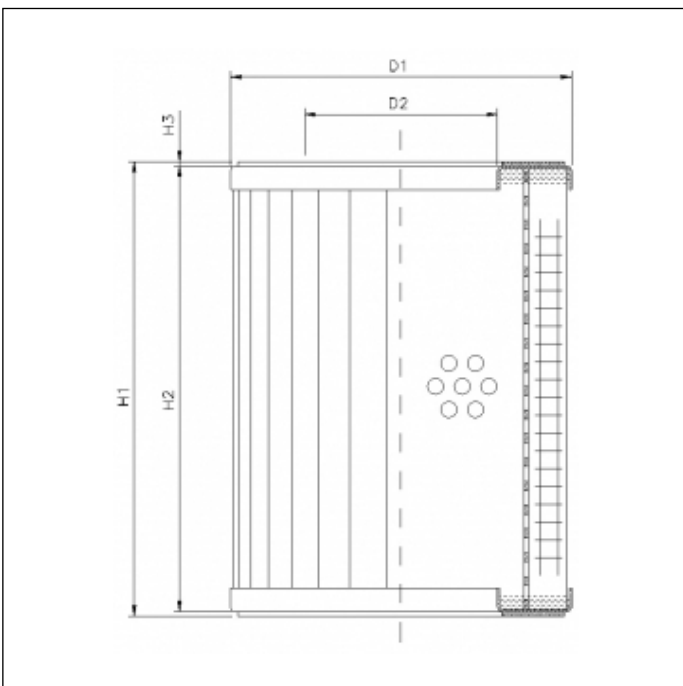
## RVR11800E10B

printed on: 21-05-2025



### TECHNICAL INFO

Media type	INORGANIC FIBERGLASS
Efficiency	10 $\mu\text{m}_{(c)}$ $\beta_x \geq 200$
Efficiency 1	12 $\mu\text{m}_{(c)}$ $\beta_x \geq 1000$
Flow direction	OUT-IN
Collapse $\Delta p$	30 bar
Seals	NBR
Temperature range	-30°C +100°C



### OVERALL DIMENSIONS

D1	142,0 mm
D2	94,0 mm
H1	754,0 mm
H2	746,0 mm
H3	4,0 mm

Technical information may change without notice. Image and drawing are representative only