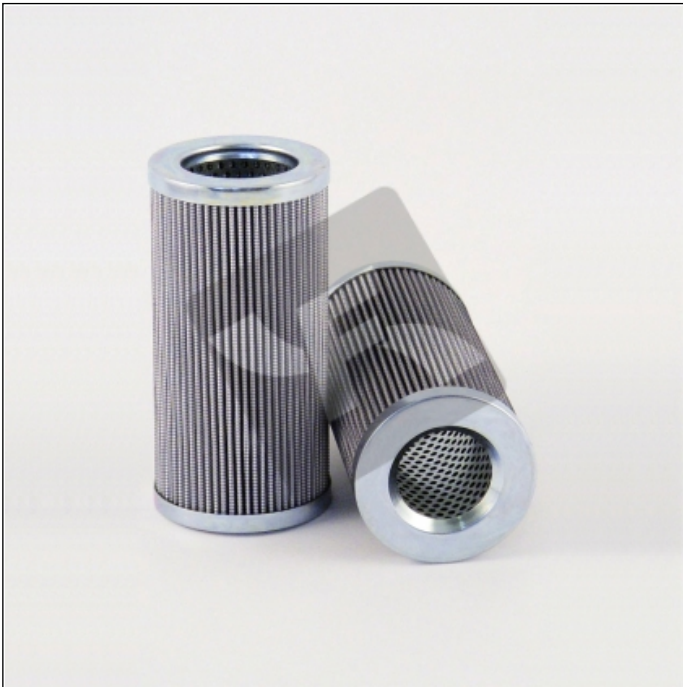


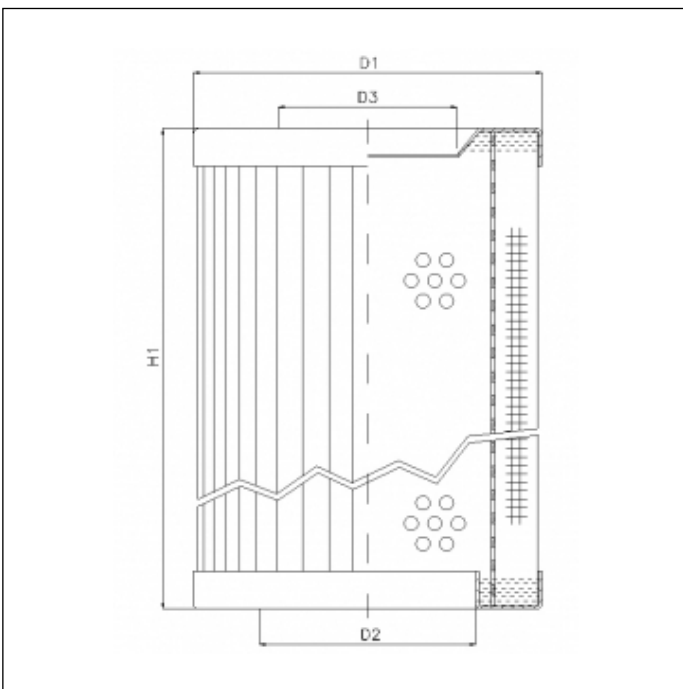
RVR1225B100B

printed on: 20-05-2025



TECHNICAL INFO

Media type	WIRE MESH
Efficiency	100 µm
Flow direction	OUT-IN
Collapse Δp	30 bar
Temperature range	-25°C +120°C



OVERALL DIMENSIONS

D1	74,0 mm
D2	46,0 mm
D3	38,5 mm
H1	222,0 mm

Technical information may change without notice. Image and drawing are representative only