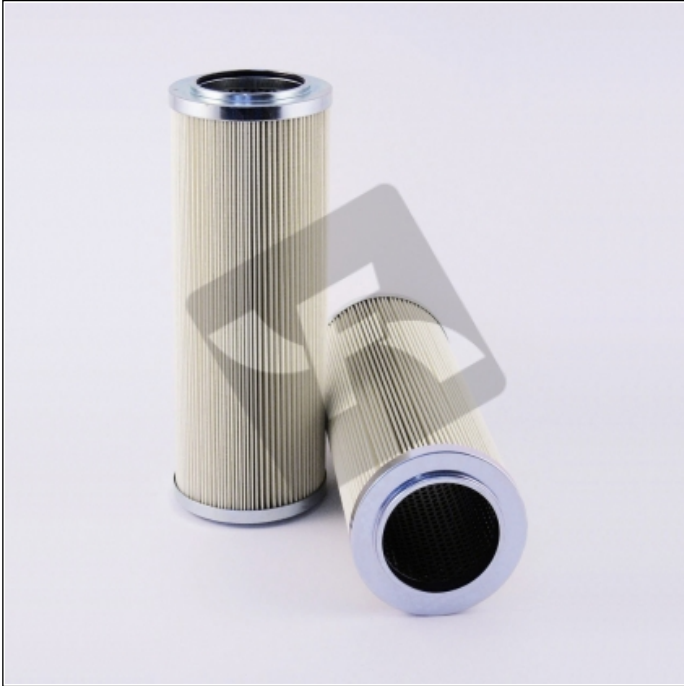


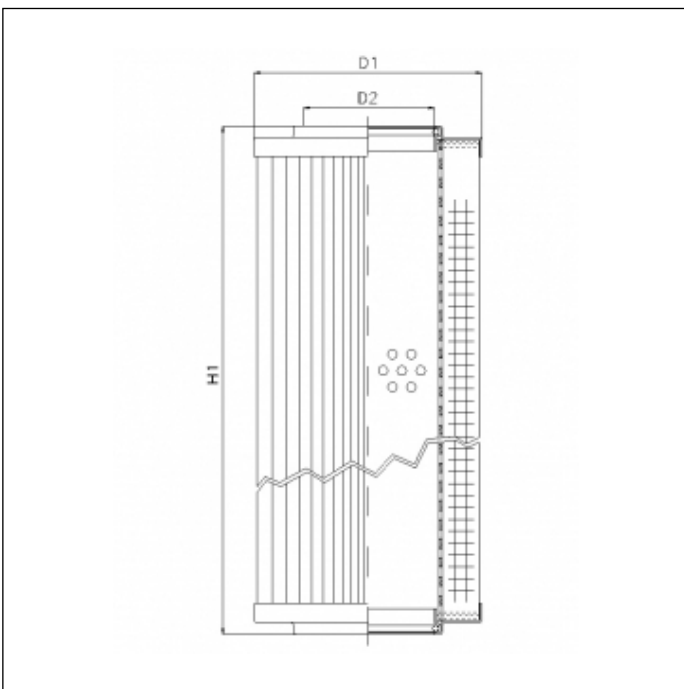
## RVR1561B100B

printed on: 23-04-2025



### TECHNICAL INFO

Media type	WIRE MESH
Efficiency	100 µm
Flow direction	OUT-IN
Collapse $\Delta p$	30 bar
Seals	NBR
Temperature range	-30°C +100°C



### OVERALL DIMENSIONS

D1	142,0 mm
D2	94,0 mm
H1	264,0 mm