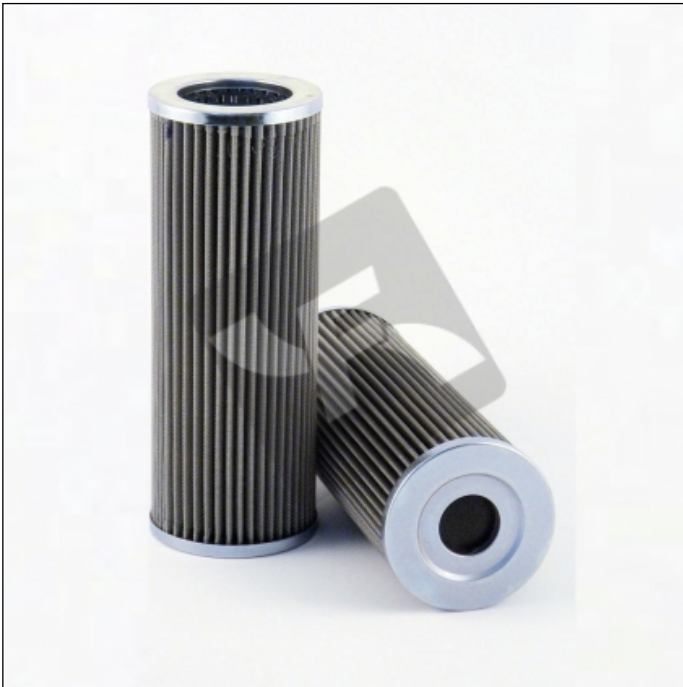


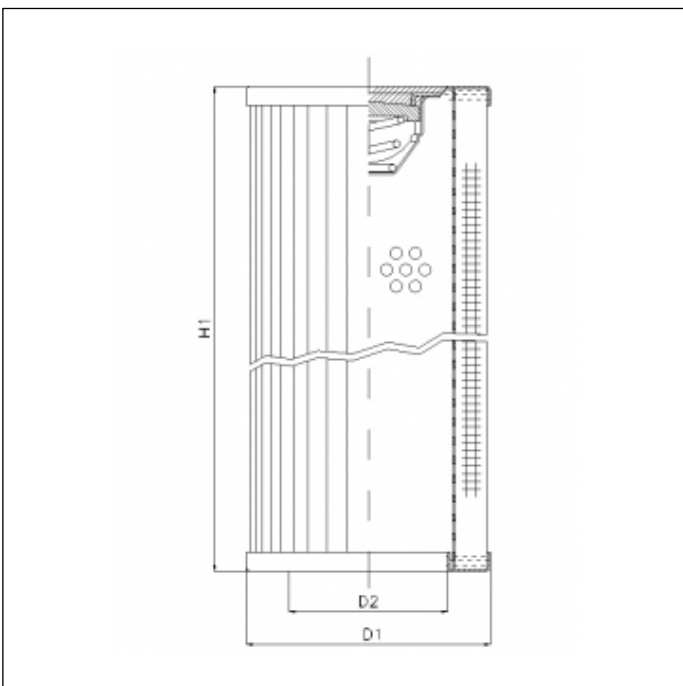
RVR165B10B

printed on: 21-05-2025



TECHNICAL INFO

Media type	WIRE MESH
Efficiency	10 µm
Flow direction	OUT-IN
Collapse Δp	30 bar
Bypass setting	2.0 bar
Temperature range	-25°C +120°C



OVERALL DIMENSIONS

D1	102,0 mm
D2	66,5 mm
H1	178,0 mm