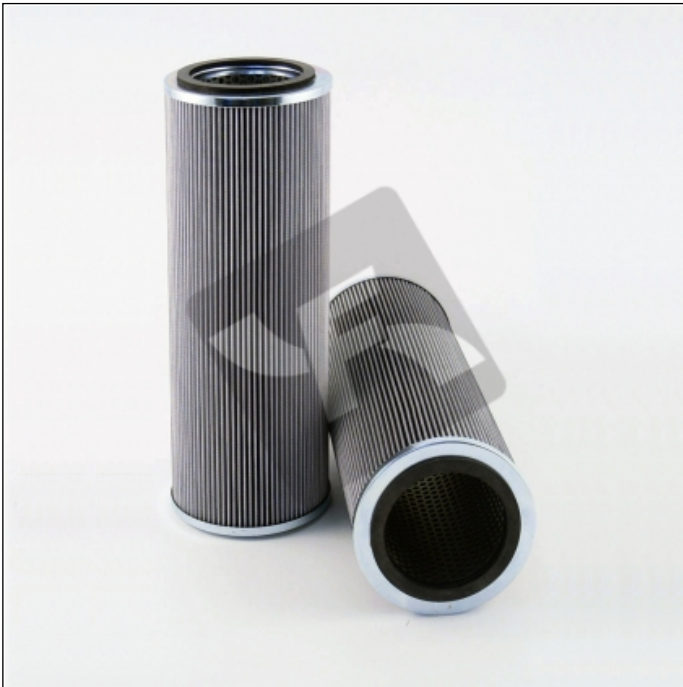


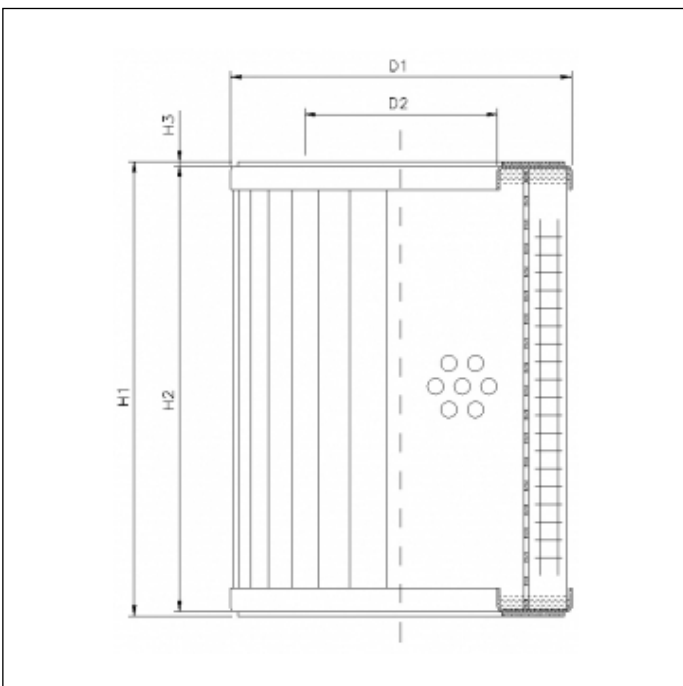
## RVR1900B60B

printed on: 13-04-2026



### TECHNICAL INFO

Media type	WIRE MESH
Efficiency	60 µm
Flow direction	OUT-IN
Collapse Δp	30 bar
Seals	NBR
Temperature range	-30°C +100°C



### OVERALL DIMENSIONS

D1	142,0 mm
D2	94,0 mm
H1	381,0 mm
H2	373,0 mm
H3	4,0 mm