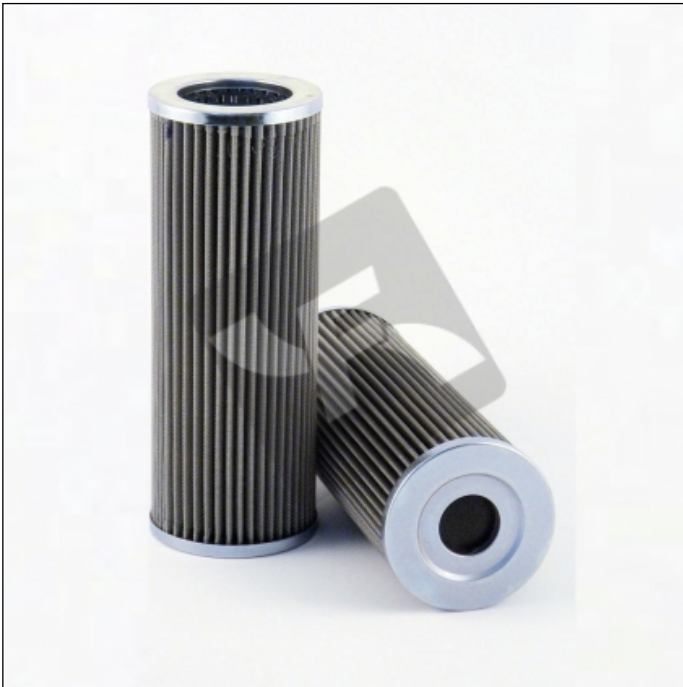


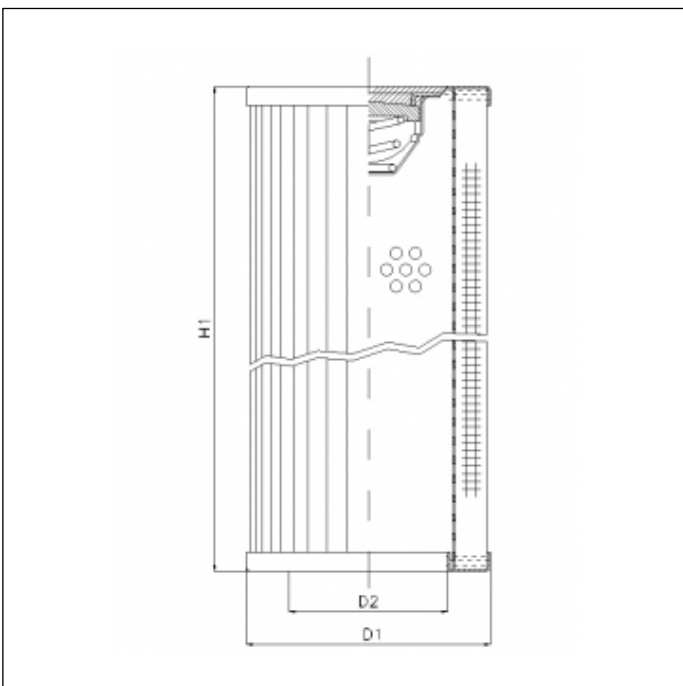
RVR250B60B

printed on: 23-04-2025



TECHNICAL INFO

Media type	WIRE MESH
Efficiency	60 µm
Flow direction	OUT-IN
Collapse Δp	30 bar
Bypass setting	2.0 bar
Temperature range	-25°C +120°C



OVERALL DIMENSIONS

D1	102,0 mm
D2	66,5 mm
H1	223,0 mm