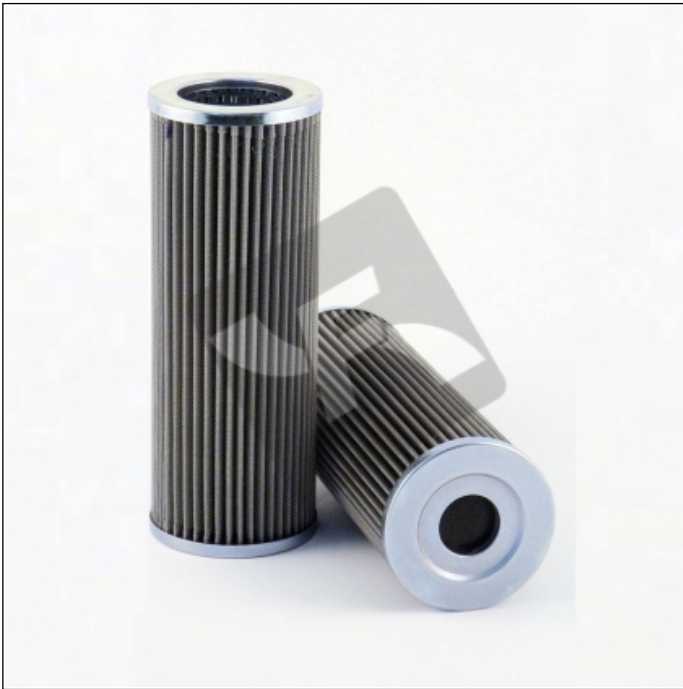


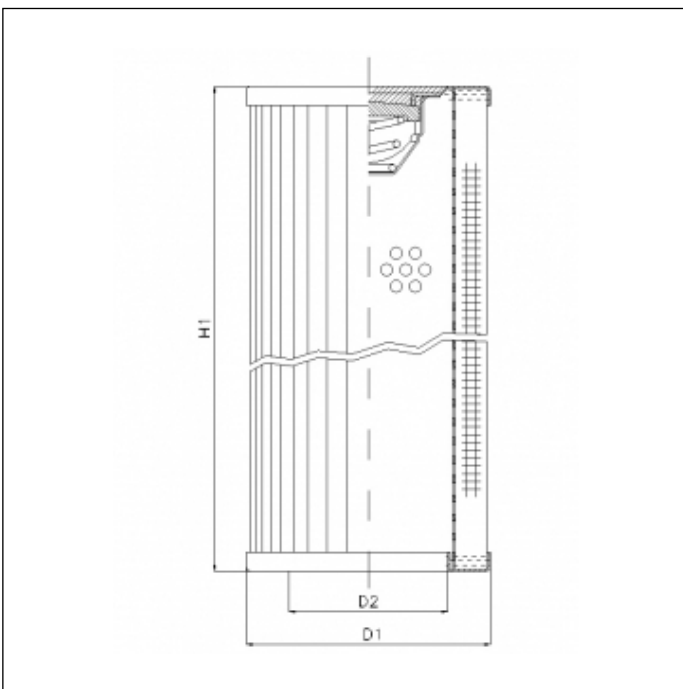
RVR330A05B

printed on: 13-04-2026



TECHNICAL INFO

Media type	STAINLESS STEEL FIBER
Efficiency	5 $\mu\text{m}_{(c)}$ $\beta_x \geq 200$
Flow direction	OUT-IN
Collapse Δp	30 bar
Bypass setting	2.0 bar
Temperature range	-25°C +120°C



OVERALL DIMENSIONS

D1	102,0 mm
D2	66,5 mm
H1	273,0 mm