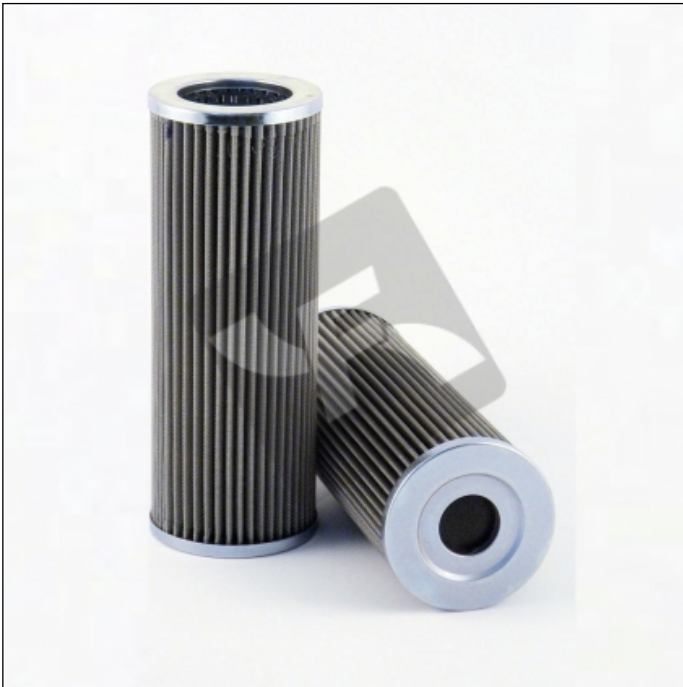


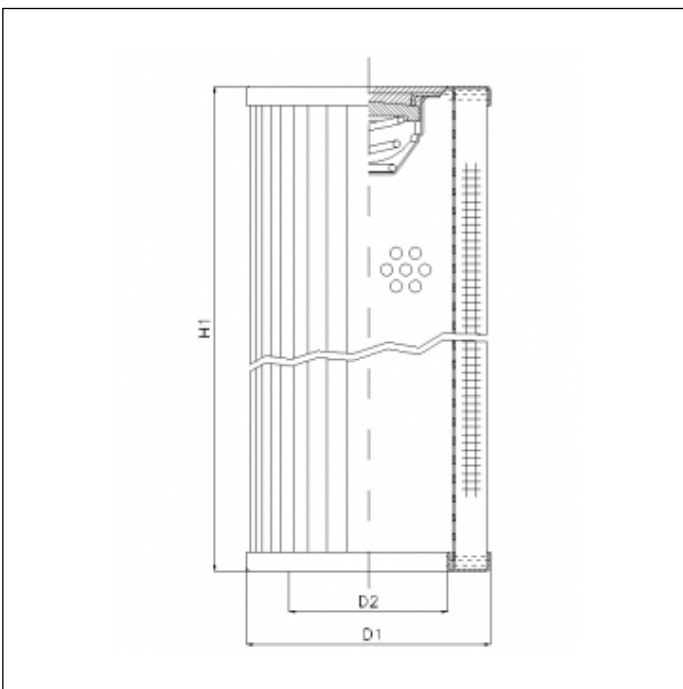
## RVR330B25B

printed on: 23-04-2025



### TECHNICAL INFO

Media type	WIRE MESH
Efficiency	25 µm
Flow direction	OUT-IN
Collapse $\Delta p$	30 bar
Bypass setting	2.0 bar
Temperature range	-25°C +120°C



### OVERALL DIMENSIONS

D1	102,0 mm
D2	66,5 mm
H1	273,0 mm