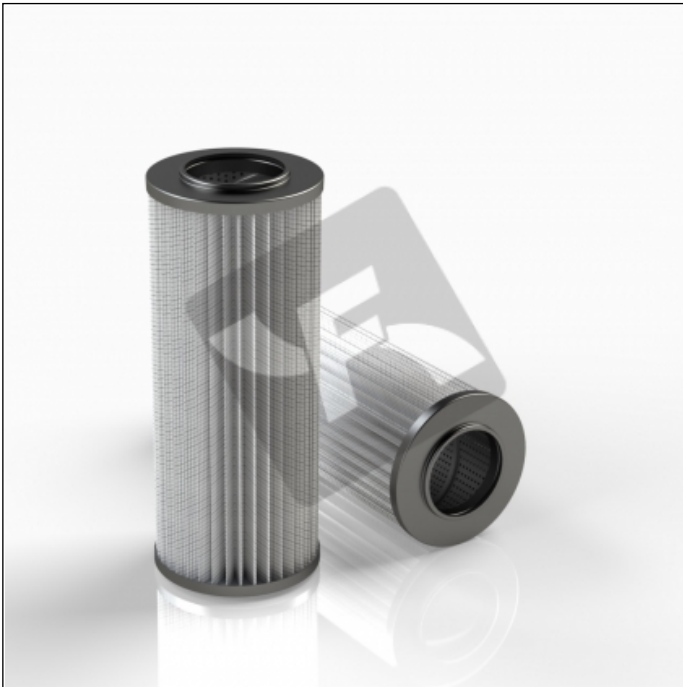


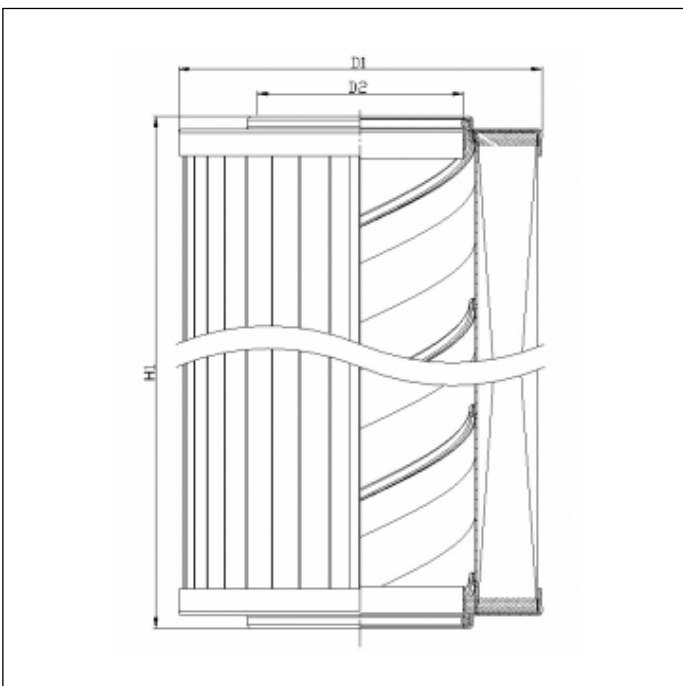
XR250G06V0

printed on: 23-04-2025



TECHNICAL INFO

Media type	INORGANIC FIBERGLASS
Efficiency	5 $\mu\text{m}_{(c)}$ $\beta_x \geq 200$
Efficiency 1	7 $\mu\text{m}_{(c)}$ $\beta_x \geq 1000$
Flow direction	OUT-IN
Collapse Δp	10 bar
Seals	FKM
Temperature range	-25°C +120°C



OVERALL DIMENSIONS

D1	110,0 mm
D2	52,5 mm
H1	250,0 mm